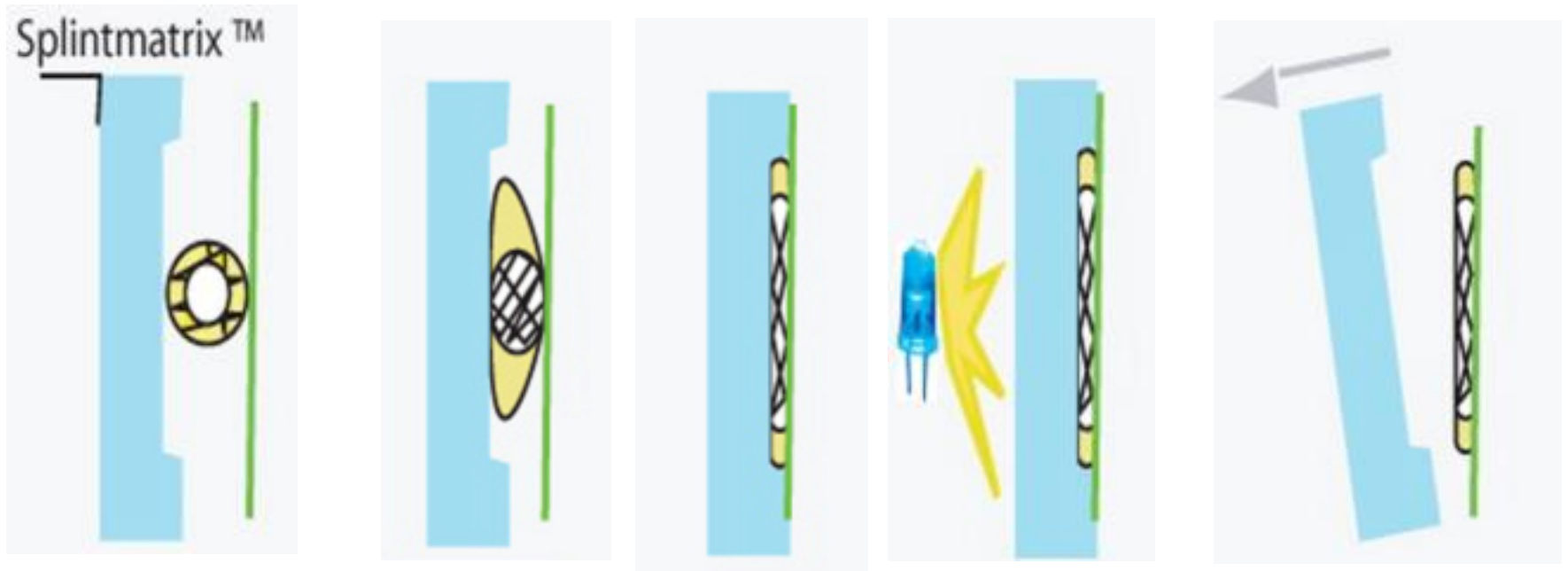


*Fast Splint Matrix* Technique  
**Orthodontic Splint – Direct Method**

## The *Fast Splint Matrix* Technique



The technique ensures that the tubular form of the fiber is compressed to a flat shape, also creating an increased bondable strip on each side of the fiber.

## The *Fast Splint Matrix* Technique



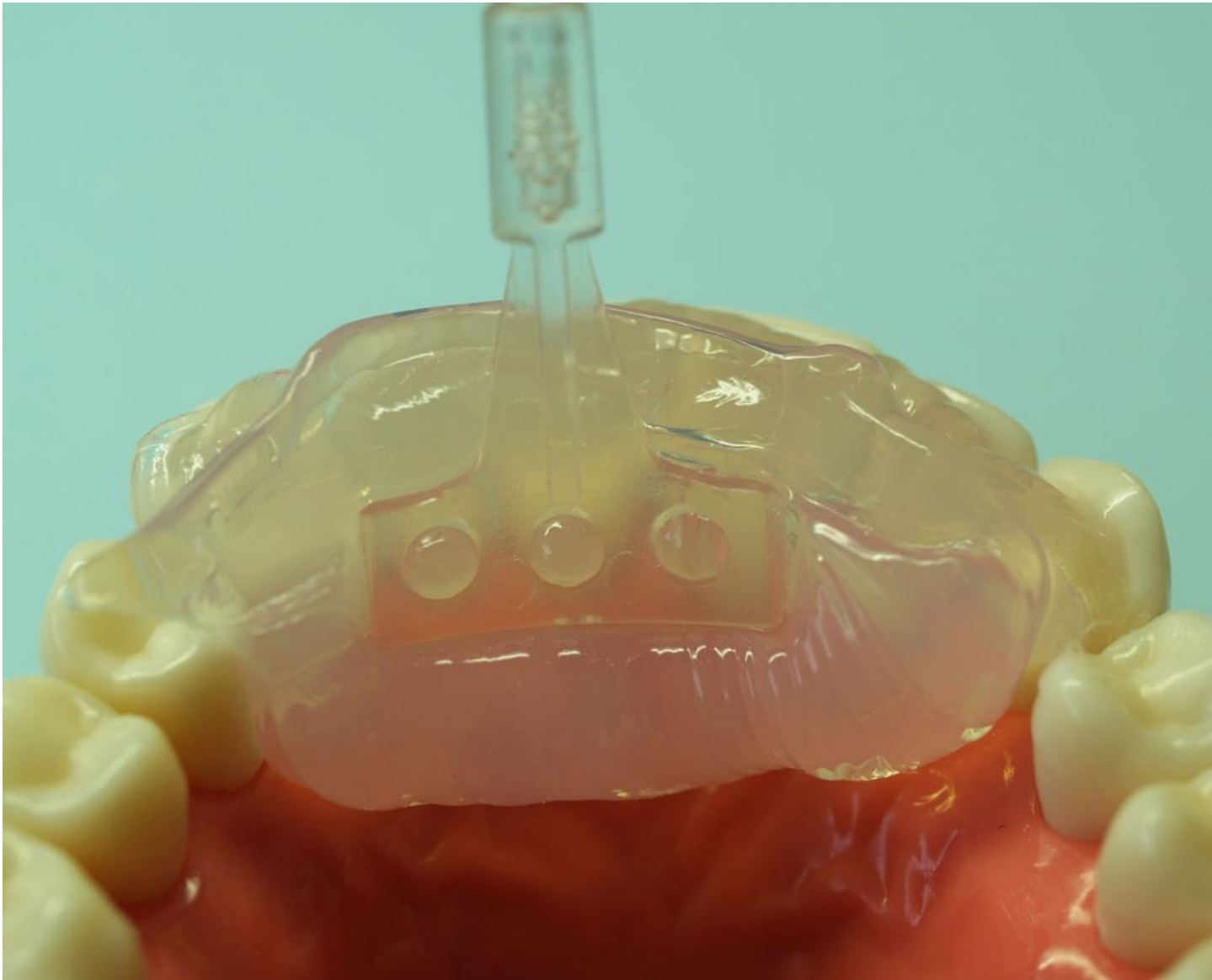
The technique ensures that the tubular form of the fiber is compressed to a flat shape, also creating an increased bondable strip on each side of the fiber.



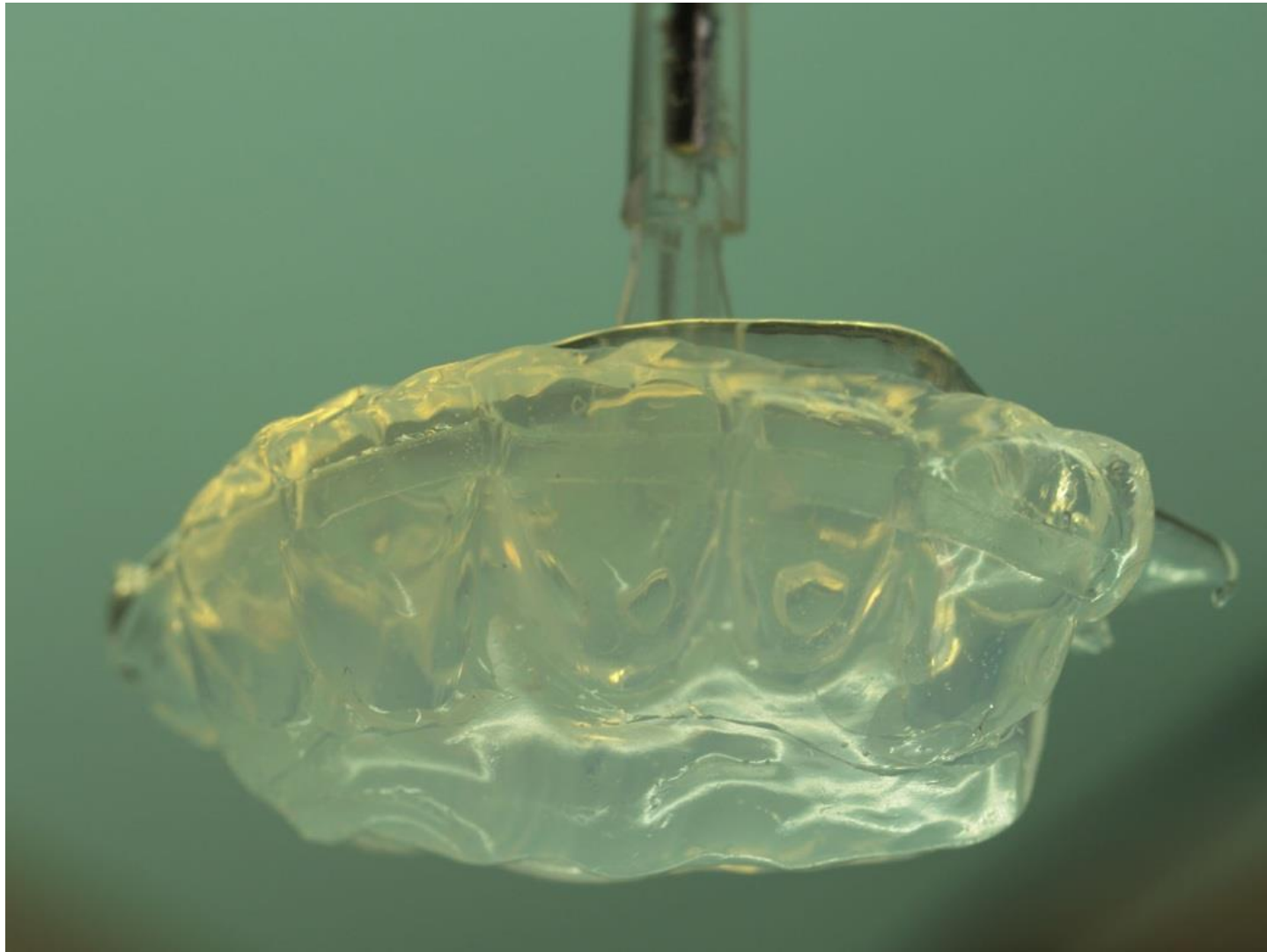
Place sticky wax strip onto lingual surface at contact points



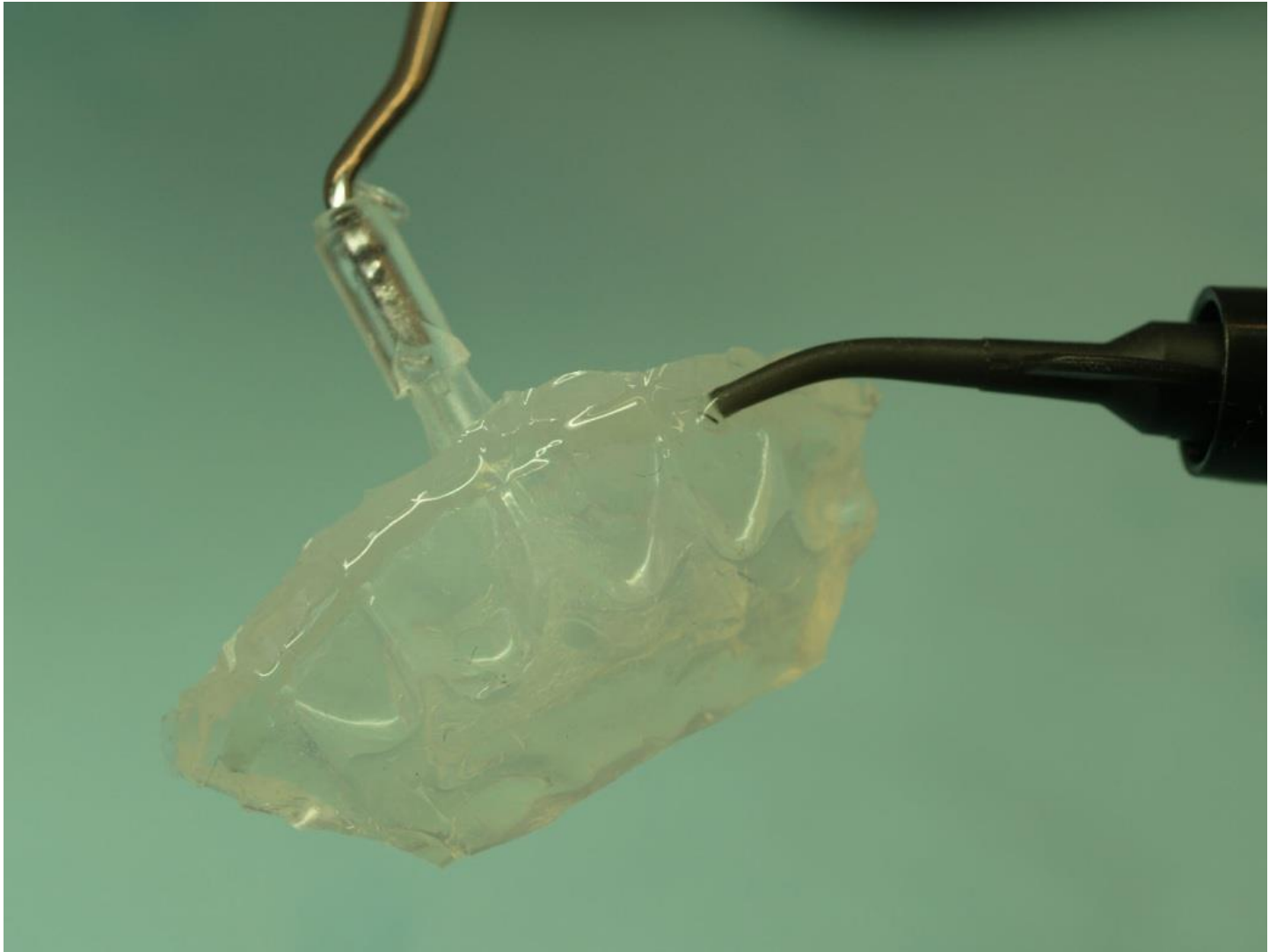
Inject clear silicone to create matrix



Place holder tip into clear silicone



Once the silicone is cured and wax removed, a trough is registered in the index/matrix

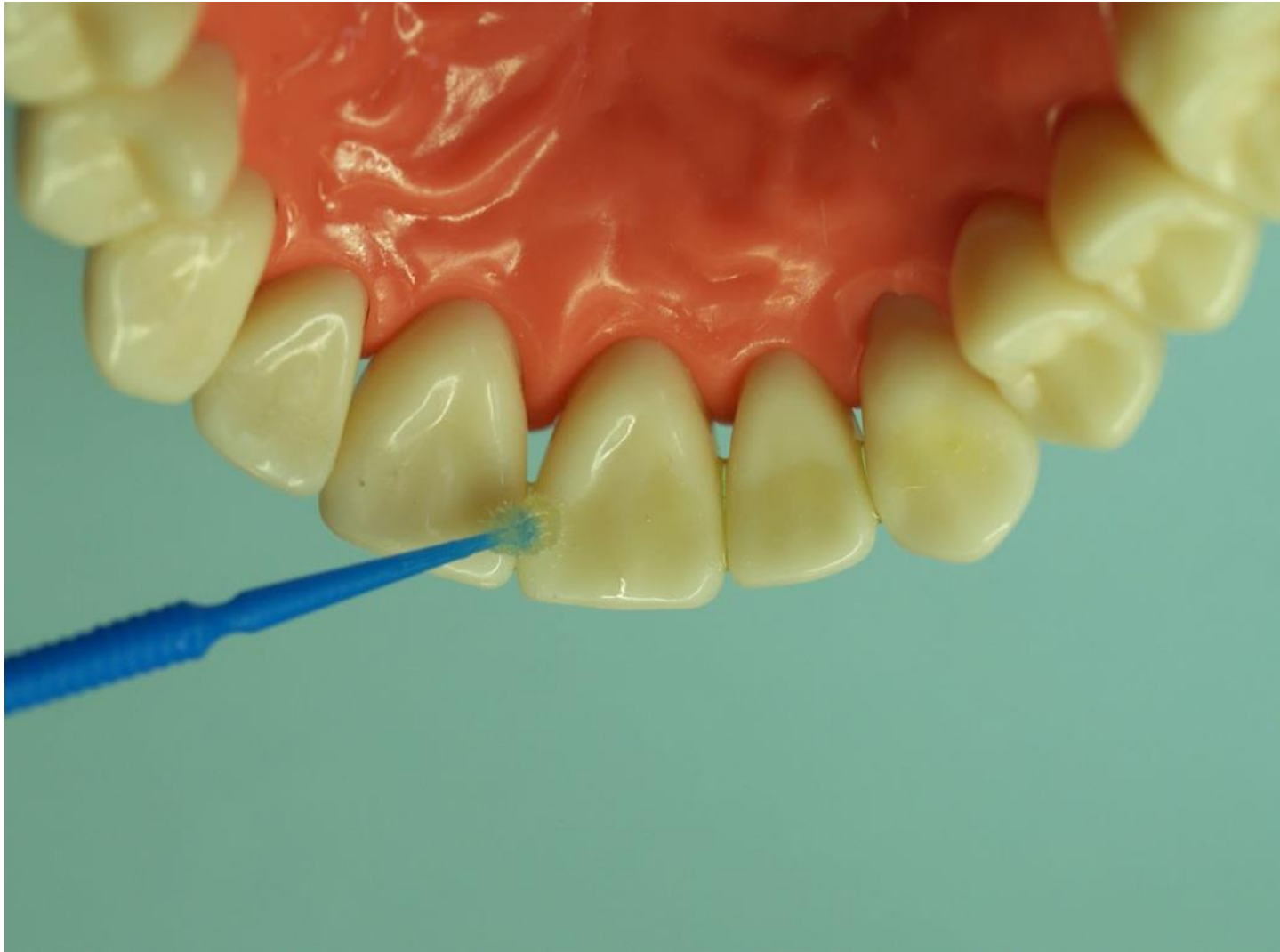


Inject flowable composite into trough

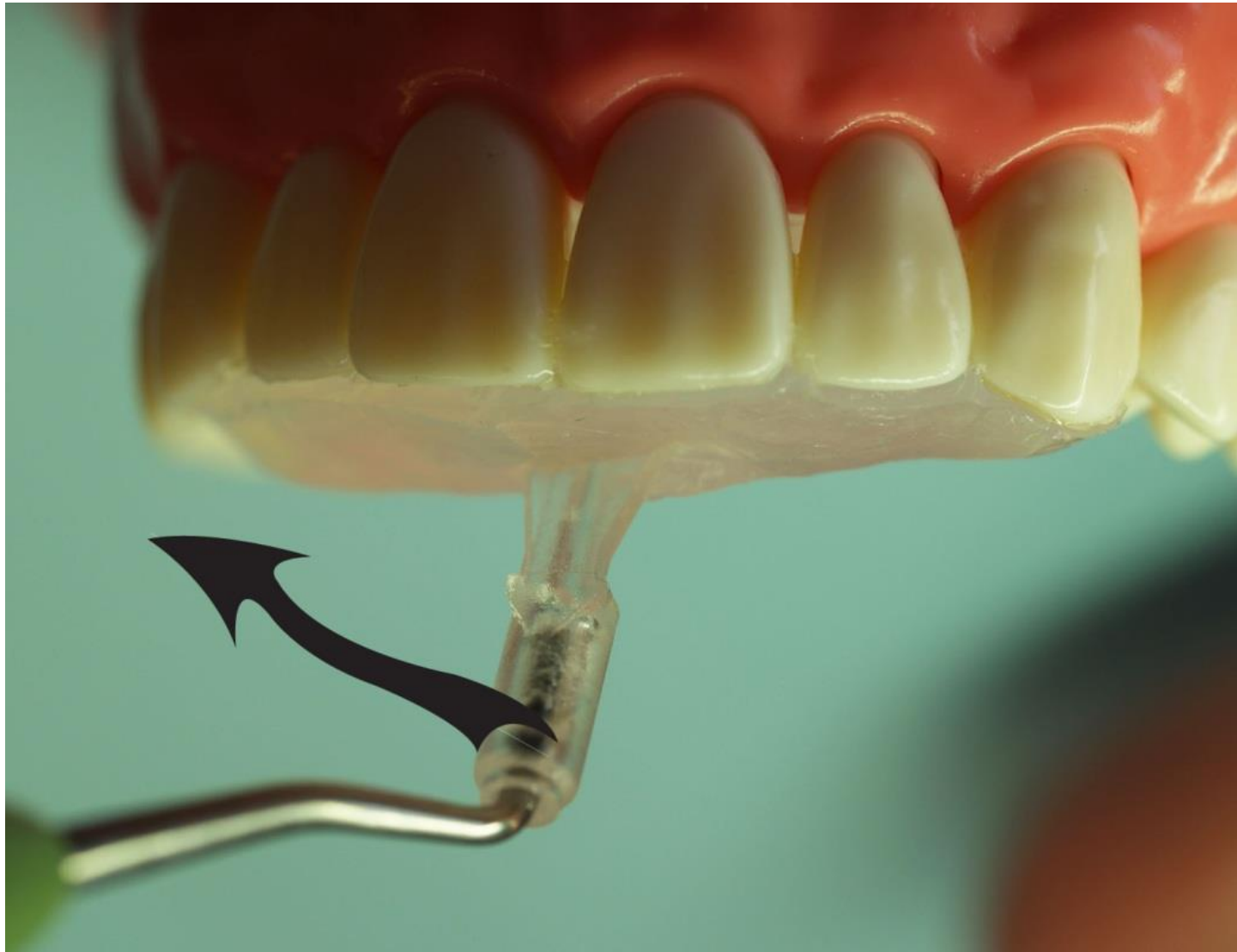




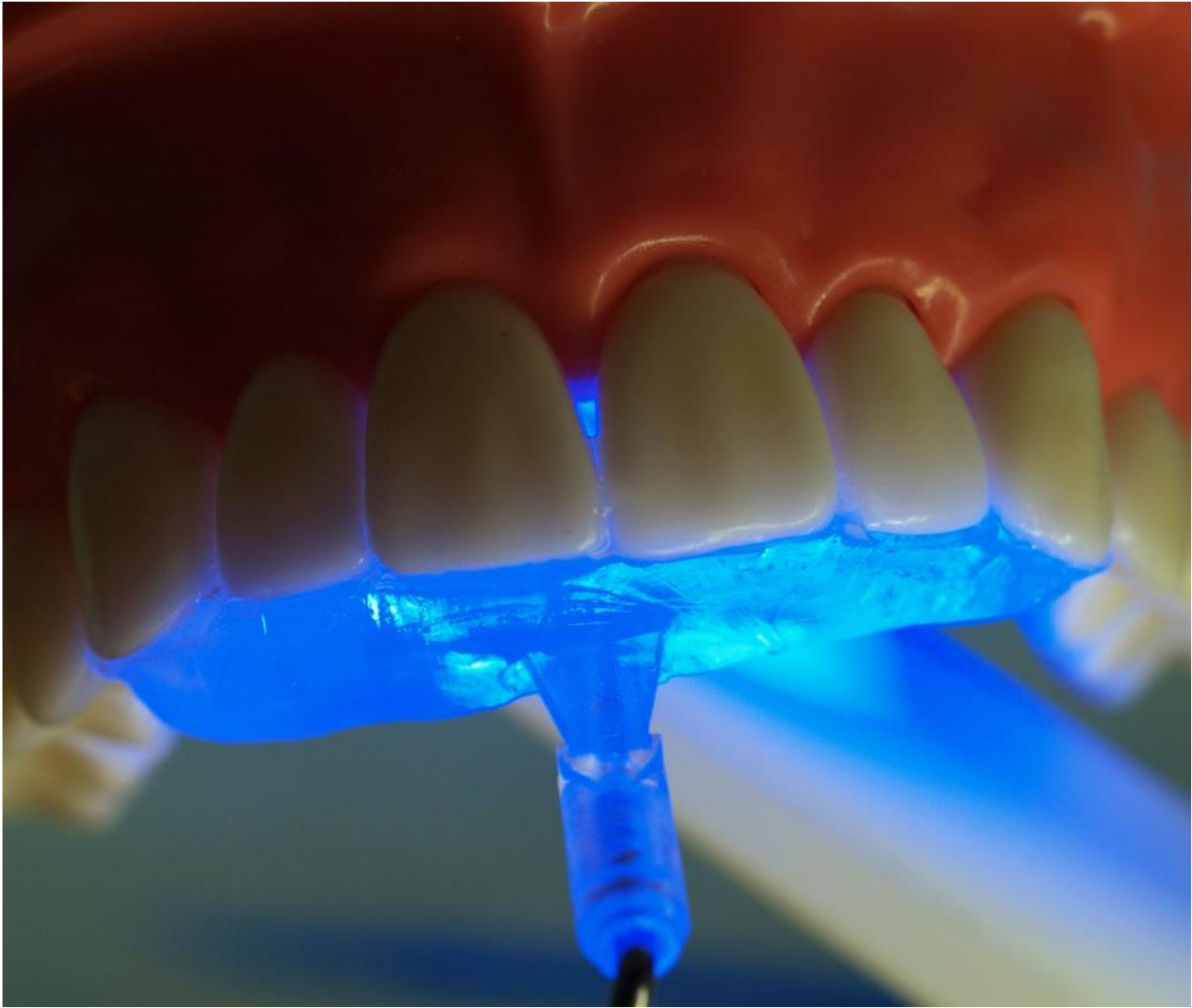
Insert *Fast Splint Matrix Ortho* fiber rope into trough



Prepare tooth surfaces for bonding



Place matrix into position



Light cure



Remove matrix



Cover splint with flowable composite, then light cure.



Finish and polish